

County Parcel

68 ACRES, PLYMOUTH

A collaborative effort that links the Trust's Six Ponds East and Emery West Preserves to form 250 contiguous acres of open space on the west side of Long Pond Road. The conjoined area is adjacent to several thousand acres of other protected parcels. This new parcel is owned by the town of Plymouth

- Ⓞ Links Protected Land
- Ⓞ Biomap Core Habitat
- Ⓞ Headwaters Protection
- Ⓞ Nature Trails
- Ⓞ Wildlife Corridor
- Ⓞ Upland Woods
- Ⓞ Partnership

County Parcel Strengthens Six Ponds/Emery Properties

The protection of long-sought 65 acres off Long Pond Road in South Plymouth helps guarantee a much larger landscape of unfragmented forest and critical habitats.

Route 3, the highway that connects Boston to Cape Cod, is among the most heavily utilized roads in New England. Big box stores, malls, fast food outlets, gas stations, and office parks greet the traveler at all but a few of the highway ramps along this 50-mile stretch of the South Shore. At Exit 11 in Duxbury, a vast cranberry bog complex provides a gateway to the scenic town; and in Plymouth at Exit 3, an expanse of conservation lands stands as the entrance to the Pine Hills and Six Ponds neighborhoods of Plymouth. In Duxbury, it was the town's general aversion to large scale commercial development that saved its gateway,

CONTINUED ON PAGE 6



The Wildlands Trust is a non-profit organization dedicated to conserving land and preserving the natural heritage of Southeastern Massachusetts. We work to permanently protect and steward important habitats and landscapes, including woodlands and fields, ponds, coastal areas, agricultural lands, and river systems.

Wildlands Joins Partnership Of Regional Land Trusts To Put Americorps Boots On The Ground

Since spring of 2009, Wildlands Trust has worked with seven other Massachusetts land trusts, led by Athol-based Mount Grace Land Conservation Trust, to design an Americorps project that would increase statewide capacity for land conservation. Americorps is a network of national service programs engaging 75,000 members each year in intensive service to non-profits working in areas of education, public safety, health, and the environment.

Our partnership, Mass LIFT (Massachusetts Land Initiative for Tomorrow), learned early this past summer that the project had been funded, enabling the partnership to deploy 20 Americorps members on land conservation projects across the state.

After months of reviewing resumes and interviewing candidates, Wildlands Trust has hired three Americorps members who will be working with us in southeastern Massachusetts. Their work will focus on stewardship, public outreach, and land acquisition and will open up new opportunities for the Trust to protect land throughout the region. It is also an opportunity for the talented employees at the Trust to help mentor the next generation of conservationists.



Americorps members Alex Etkind, Sarah Kugel, and Allison Gillum (left to right) have recently arrived to bolster the ranks of the Wildlands Trust staff.

Karen Grey
Executive Director

- Board of Directors
CHAIR
 Doug Hart/*Duxbury*
VICE CHAIR
 Crystal Farrar Gould/*N. Marshfield*
SECRETARY
 Michael Nuesse/*Hull*
TREASURER
 Michael J. Hanlon/*Plymouth*
 Philip B. Benjamin/*S. Easton*
 Ken Johnston/*Duxbury*
 Cap Kane/*Duxbury*
 Pam Kirkpatrick/*Swansea*
 Gary Langenbach/*Kingston*
 Kenneth C. Leonard/*Lakeville*
 Greg Lucini/*Berkley*
 Ellen Milt/*Plymouth*
 Virginia Murray/*Plymouth*
 Wayne R. Petersen/*Hanson*
 Les Plimpton/*Plymouth*
 Howard Randall/*Plympton*
 Charlotte Russell/*Plymouth*
EMERITA
 Helen Philbrick/*Duxbury*

- Staff**
EXECUTIVE DIRECTOR
 Karen H. Grey
ASSISTANT DIRECTOR
 Gabriela Silva, Ph.D.
DIRECTOR OF MONITORING & PRACTICES
 Jessica Schultz
LAND PROTECTION SPECIALIST
 Scott MacFaden
DIRECTOR OF STEWARDSHIP
 Jim Dehner
MEMBERSHIP COORDINATOR
 Kay Foster
MAPPING AND GIS
 Marilyn Levandoski
ACCOUNTING
 Lisa Burch
COMMUNITY GARDEN MANAGER
 Elaine Pollack
AMERICORPS MEMBERS
 Alex Etkind
 Allison Gillum
 Sarah Kugel

Administrative offices are at 165 West Street, Duxbury, MA.
 FOR INFORMATION about membership or the benefits of conveying land or conservation restrictions (agricultural included) to the Trust, call or write:
 Wildlands Trust of Southeastern Massachusetts
 P.O. Box 2282
 Duxbury, MA 02331
 (781) 934-9018 Phone
 (781) 934-8110 Fax
 wtsm@wildlandstrust.org
 www.wildlandstrust.org



Recently Completed Projects Protect Rare Habitats and Beloved Local Farm

Focus continues on saving region's biodiversity and agricultural heritage

EEL RIVER HEADWATERS CPA CR. Wildlands Trust worked in partnership with The Nature Conservancy and the Town of Plymouth to protect the headwaters of the Eel River. The property was acquired by the town of Plymouth with Community Preservation Act (CPA) funds and it is now part of Plymouth's Eel River Preserve. This parcel has important natural habitats including upland woods adjacent to the Eel River; and it is a link in the North branch of the Plymouth Wishbone Trail. Abutting properties are also protected.

ANDERSON FARM APR. Wildlands Trust worked with the landowners, Town of West Bridgewater, and state Department of Agricultural Resources (DAR) on this great project. The Anderson Farm is now forever protected with an Agricultural Preservation Restriction (APR). This means that the 116 acres of land will always be kept in active agriculture. The Town and DAR co-hold the APR. Much of these lands are on the Town River—a major tributary to the Taunton River. Core habitat, which means its natural habitats, are of utmost conservation importance.

HOYT'S POND CPA CR. The Nature Conservancy (TNC) led efforts to protect this property and worked closely with Wildlands Trust staff and the Town. The town of Plymouth acquired this property with CPA funds and support from TNC. This property is characterized by important Pine Barrens habitat. Additionally, the property is nestled among conservation lands including Plymouth's Eel River Preserve, TNC's Bernard Holmes Preserve, Massasoit National Wildlife Refuge, and Miles Standish State Forest.

Eel River CPA CR
24.52 ACRES, PLYMOUTH
 Collaborative effort to protect and restore the Eel River headwaters.

- Water Protection
- Wildlife Corridor
- Upland Woods
- Passive recreation
- Important Habitat
- Partnership

Anderson Farm APR
116 ACRES, WEST BRIDGEWATER
 Trust led effort that preserved one of the last dairy farms in Plymouth County

- Agricultural Fields
- Scenic Roadside Views
- Mixed Woods
- Historic land use
- Rural Character
- Partnership

Hoyt's Pond CPA CR
18.39 ACRES, PLYMOUTH
 Key linkage between Eel River Preserve and Myles Standish State Forest

- Pine Barrens
- Trail Linkages
- Upland Woods
- Wildlife Corridor
- Coastal Plain Pond
- Partnership

Scout's Honor: Jacob Skolnik Tackles Tucker

Eagle Scout earns his wings with worthy project



TOP PHOTO: Stewardship Director Jim Deahner (L) and summer assistant Alex Lloyd-Evans, also an Eagle Scout (R), admire the new kiosk built by Eagle Scout Jacob Skolnik (C)

Wildlands Trust has long enjoyed friendships with aspiring Eagle Scouts from the region who carry out projects on our conservation lands. This past year, the Tucker Preserve in Pembroke benefited from a project undertaken by Jacob Skolnik. Jacob's project required clearing new trails and cutting back existing ones, creating

maps using GPS, and building and installing benches and a kiosk.

He coordinated his project with the Pembroke Conservation Commission, managed a crew of volunteers for trail work, and raised money for materials.

This was a labor-intensive project and thus potentially expensive, but because of Jacob's resourcefulness, it was accomplished at no cost to the Trust. We are most appreciative to Jacob and his volunteers for undertaking these upgrades to the Tucker Preserve.

PHOTO LEFT: Jacob Skolnik and a volunteer planning and clearing trails at the Tucker Preserve



THANKS TO OUR RETIRING DIRECTORS



The Trust extends thanks to exiting board members:

- LeBaron R. "Rusty" Briggs IV
- Lynn Cornelius
- Peter Demuth
- Tudor G. "Jerry" Ingersoll
- Shirley Muirhead Jenkins

In all, they have given 51 years of their diverse talent, energy, and insight to ensure Wildlands Trust stays a strong and effective organization. Happily, most will continue to share their ideas and lend their expertise as members of several committees. We offer our sincere thanks and appreciation for all their contributions that have helped make the Wildlands Trust what it is today.

Situations We Are Tracking

Keeping our ear to the ground and a seat at the table is a big part of the work we do at the Trust. Here are some of the issues we are working on that may be of interest to you.

Brockton Audubon To Transfer 126-Acre Parcel To Wildlands Trust, Assuring Permanent Protection

During the early 1950s, at a time when the northwest corner of Brockton still had farms and open land, the Brockton Audubon Society was established to promote bird conservation, environmental education, and local land protection. Over the years, the small, grass-roots organization accepted several gifts of land on the Brockton-Easton border where it held programs for birders and local school children. The Brockton Audubon has been fairly inactive for the past decade but the organization still holds one of the last significant parcels of open space in the city. Wildlands Trust is pleased, after years of informal talks, that the trustees of Brockton Audubon will be transferring its 126-acre parcel to the Trust for permanent protection as conservation land. This will be the Trust's first large parcel in an urban setting and we look forward to the new opportunities it presents.

New ATV Laws Strengthen Protection for Land By Strengthening Penalties For Violators

One of the biggest challenges land trusts face is the illegal use of conservation lands by all-terrain vehicle (ATV) riders. However, our jobs were made easier on Saturday, July 31, 2010 when Governor Deval Patrick signed into law a bill aimed at increasing the safety of ATV riding and heightening the protection of natural resources on public and private lands. The signing of the bill, which provides stiff penalties and fines for violators, came just months after six people were injured when their ATVs plunged off a cliff into a rocky ravine in South Hadley, Massachusetts.

WILDLANDS INTRODUCES "TRAILBLAZERS" AS A MODEL FOR VOLUNTEER STEWARDSHIP

If you enjoy being outside, join the Trust's new volunteer corps—Wildlands Trailblazers. We need dedicated individuals to help care for properties and perform trail maintenance on our conservation land throughout southeastern Massachusetts. A commitment of four volunteer work sessions per year is required for membership. Children over the age of 13 are welcome to join when accompanied by an adult. Tools, safety equipment, and supervision will be provided at every session. Initial training for charter members will be held this winter.

To join, please visit our web site: www.wildlandstrust.org



WILDLANDS HONORS OUR OWN "SUPER LAWYERS"

- PETER DEMUTH
Mintz Levin
- MICHAEL NUESSE
Law Office of Michael Nuesse
- GARRETT WINSLOW
Mintz Levin
- TAVIS MORELLO
Mintz Levin
- STEFAN NAGEL
Law Office of Stephen Small

Each year, "Super Lawyers" publication honors top Mass. attorneys. Wildlands would like to recognize our own "Super Lawyers"—individuals who donate hundreds of hours each year to help us with real estate transactions, governance, best management practices, and policy development. Running a land trust is complicated business these days and we appreciate the services of the attorneys who help to guide the Trust.

...Six Ponds/Emery Properties

—CONTINUED FROM PAGE 1

but in Plymouth, where zoning is less restrictive, it was the efforts of private individuals that protected the scenic lands, which today frame this peaceful section of the state's largest municipality.

Wildlands Trust had its humble beginnings in this very area of Plymouth

where, in 1973, the Emery Family donated a significant piece of conservation land. What we now call the "Emery Preserve" was a 90-acre mixed woodland parcel in the Six Ponds neighborhood. The land had been part of the family holdings for most of the 20th century and second-generation owners Mary and Arthur Emery opted to protect the land permanently with the Trust.

Over subsequent decades, the Trust continued to expand its holdings around Six Ponds by adding parcels that were nearby or contiguous with the Emery Preserve. The next generation of Emerys gifted more land to the Trust, as did the Goodhue, Briggs, Burchell, Tayler-Touster, and Conant families. In addition to these generous, conservation-minded families, hundreds of other people contributed funds so the Trust could make conservation purchases in this area.

The Town of Plymouth also has played an important role, making strategic conservation purchases and accepting donations such as the 206-acre parcel given to the town by the Pine Hills.

But until most recently, one very important piece of this land mosaic remained elusive—a 65-acre parcel on Long Pond Road that came to be known as "the hole in the

Land protection projects like this are accomplished through strong partnerships and the work of many. Our thanks to:

- Plymouth Town Meeting Voters
- The Plymouth CPC
- Charlotte Russell and Sam Chapin, Fundraising Co-chairs
- Mass. Department of Fish and Game
- Plymouth County Commissioners
- The many generous private donors who made this possible

donut." The parcel had been gifted to the Jordan Hospital by a local family and later traded by the hospital to Plymouth County. In the spring of 2008, the Trust approached the County and offered to put together a deal to purchase the land for conservation once

and for all. "This land was very much on people's minds, given the number of large-scale developments proposed in the area," Trust Executive Director Karen Grey noted. "Plymouth Rock Studios was moving ahead, as was the Makepeace project. Residents were becoming very concerned about traffic in the area and rumors were flying that the 65-acre County parcel was being considered for a Park and Ride or a gravel operation".

The Trust arrived in the nick of time as the County had just completed a study to determine potential uses for the land. "In my first meeting with the County, they showed me plans for the options they were considering—a 400-unit 40 B, a light industrial park, and 16 separate 3-acre house lots," Grey recalled. "This got everyone's attention and we mobilized quickly."

On August 31, after many months of meetings, negotiations, and fundraising, the property became Plymouth conservation land through the collaborative efforts of residents, Wildlands Trust, the Town of Plymouth, and the Mass Department of Fish and Game. The Trust's Six Ponds East and Emery West Preserves are now linked to form 250 contiguous acres of open space on the east side of Long Pond Road, the whole conjoined area being adjacent to thousands of other protected acres.

In Memory of

JOAN BENNETT

-Mark Mahoney & Ilene Horvitz, *Duxbury*

GEORGE W. BRADFORD

-Jean Bradford, *Attleboro*

COLE, A BLACK LAB & FAITHFUL WALKING COMPANION

-J. Reiche, *Kingston*

ROBERT A. GOODELL, III

-Greg & Jane Bartholomew, *Santa Barbara, CA*

-Jeff & Susan Goodell, *Newbury, VT*

FRANKLIN K. HOYT

-Patricia Garrity, *Duxbury*

JOAN RIPLEY MORRISON

Gifts in Mrs. Morrison's memory will be used to protect land in the Six Ponds area of Plymouth, a place she always treasured.

-Patricia Adelman, *Plymouth*

-Priscilla Barranger, *Holmes Beach, FL*

-Six Ponds Improvement Assoc., *Plymouth*

-Dave Malaguti & Rick Balboni, *Plymouth*

-Steve & Lois McCabe, *Plymouth*

-Douglas & Lois Post, *Plymouth*

-Mr. & Mrs. W.L. Tribou, *Farmington, CT*

CLARK SHAW

-Lucie Wilson, *East Bridgewater*

In Honor of

KATE HARVEY &

MARK LAFAVER

ON THE OCCASION OF

THEIR WEDDING

-Philip Beach, *East Bridgewater*

-Lucie Wilson, *East Bridgewater*

-Peter Wilson, *East Bridgewater*

Thank You, Volunteers!

Thanks for all you do—the Trust wouldn't be where it is without volunteers.

- Susan Adams
- Ruth Anderson
- Joan Bartlett
- Kathleen Carr
- Lourdeen Casoni
- Deborah Comeau
- Julie Durant
- Chuck Foster
- Mary Gartung
- Kris Gaskins
- Dianne Grady
- Caro Gregg
- Mary Hathaway
- Maurice Joyce
- Charlyn Heidenreich
- Judson Lyon
- Bruce Macphail
- Kami Medeiros
- Bunny Mogilnicki
- Chuck Nudd
- Susan Peterson
- Margie Saunders
- Walter Shaw
- Marcy Stanton
- Sara Wilson

Thank You For Your Contribution

The Trust relies on private philanthropy to fund the work we do to save land throughout the region. You, our members, are Wildlands Trust. Thank you for your vision and for your dedication to preserving land for future generations.

Welcome New Members

We welcome these new members who joined the Trust between May and September 2010:

Laurie Abruzzizzi, *Plymouth*

Rosemary Basson, *East Freetown*

Philip Beach, *East Bridgewater*

Mr. & Mrs. Robert H. Bird, *Los Angeles, CA*

David Bongiovanni, *Bedford, NH*

John Bongiovanni, *Plymouth*

Robert Bongiovanni, *Winslow, ME*

Robert Burke, *Plymouth*

Robert H. Burpee, *Plymouth*

Mike & Maura Cesarini, *Duxbury*

Megan W. Chapin, *Plymouth*

Deborah Comeau, *Marshfield Hills*

David Cowen & Katie Brown, *Plymouth*

George Cronin, *Norwell*

Mrs. Linda Davis, *Halifax*

Joseph, Therese, & Peter DeSilva, *Plymouth*

Mrs. Jean Dobachesky, *Plymouth*

R. Patrick Ellis, *East Sandwich*

Richard Federico, Jr., *Pembroke*

Barry & Nan Foster, *Wayland*

Jeff Gilman, *Hudson*

Carolyn Gilmore, *Rochester*

Mrs. Stan Grabowski, *South Yarmouth*

Mr. & Mrs. James Hildreth, *Wareham*

Michael Housman, *Plymouth*

Kenneth & Jane Katz, *Plymouth*

Mr. & Mrs. Joseph McGaffigan, *Pembroke*

Jim, Amy, & Shane Norris, *Canton*

Amy Palmer, *Plymouth*

Diane Parent, *Middleborough*

Thomas Perkins, *Bridgewater*

Belinda Ray, *Norwell*

Dianna Ruisi, *Pembroke*

Steve & Amy Jo Silverman, *Pembroke*

Dick Terry, *Plymouth*

Stephen Thayer, *Plymouth*

Richard & Louise Tingblad, *Whitman*

Peter & Lynne Travaline, *Hanson*

Mrs. Betty Tufankjian, *Cohasset*

Nicole Vautrain, *Osterville*

Marge Vecchi, *Plymouth*

Terry & Judi Vose, *Duxbury*

Rebecca Wells, *Duxbury*

Donate Online

You can now renew your membership or donate online at the Trust's web site, www.wildlandstrust.org. Look for "Support Our Work" on the blue menu bar.

Of course, you can still use the envelope enclosed in this newsletter or call 781-934-9018.

A Special Thank You

BARNES TREE SERVICE for donating woodchips for the new section of trail at the Trust's Rounseville II Preserve in Rochester.

If you're already a member of Wildlands Trust, here's your chance to give a FREE a six-month membership to someone who isn't. The membership will include newsletters, a window decal, and admission to special events.

PLEASE SEND A SIX-MONTH FREE MEMBERSHIP TO:

NAME

ADDRESS

CITY

STATE

ZIP CODE

E-MAIL

MY NAME(S)

RETURN TO: Wildlands Trust of Southeastern Massachusetts, P.O. Box 2282, Duxbury, MA 02331

Give A
Free Gift
Membership





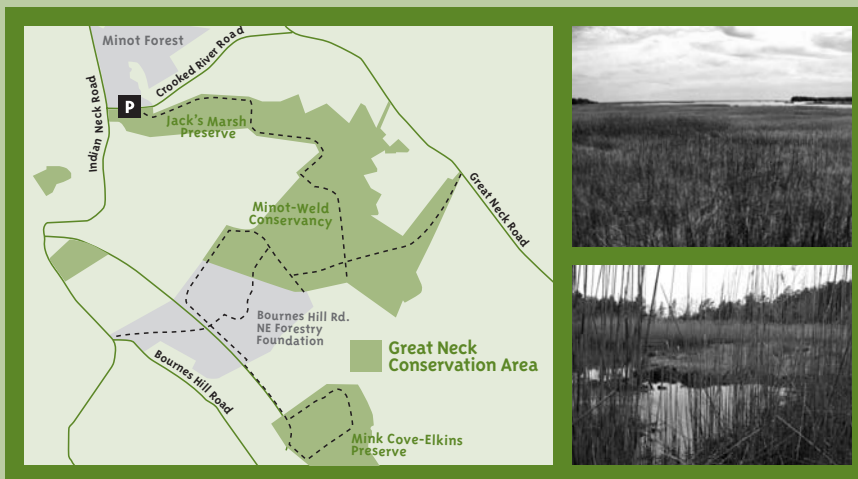
ADDRESS SERVICE REQUESTED



PROPERTY SPOTLIGHT

GREAT NECK CONSERVATION AREA Wareham, MA

A delight for birders, naturalists, and those who love a salty tang in the air.



Long-range vision and careful planning by a Wildlands Trust founding director, John W. Pierce, facilitated a number of important conservation successes. He and his wife donated several key parcels in the conservation area. These contiguous properties offer an enjoyable two-hour walk through varied coastal habitats.

Begin your visit at the parking area, where the trail leads past a saltwater marsh, an abandoned cranberry bog, and the shores of Swan Pond. From here, a path continues through the pinelands that dominate this preserve. Look for a kettle pond where common cattails, common reed, fragrant water lilies, and wild cranberries are among the wetland plants that grow there.

To the southeast, young pitch pines surround Griffith Bog, which was cultivated for cranberries in the early 20th century and is now in the process of reverting to a white cedar swamp. The trail next leads across the Philip Saltonstall-Weld Memorial Forest, owned by the New England Forestry Foundation, and a section of private land. The Trust has permission to pass over these lands, leading back to Great Neck Conservation Area.

DIRECTIONS: Rt. 195 to Exit 21, south on Rt. 28 to light. Turn right onto Tremont Road, then left onto Main Street through Wareham Center. Cross bridge and railroad tracks, then turn onto Narrows Road. Turn right onto Indian Neck Road—bear right at a split in the road and stay on Indian Neck Road. Turn left onto Crooked River Road. Parking is almost immediately on right at gated entrance. www.wildlandstrust.org